

ODOMETER
128,389 MILES

SPEED
47 MPH

DRIVER BEHAVIOR
SAFETY SCORE: 97%

CARGO STATUS
TEMPERATURE: 46°F

FUEL REMAINING
18.7 GALLONS



Driving Global IoT Innovation



***3 Million Deployments.
80 Countries.
25 Years of Excellence.***

Whether you need an OEM hardware partner or you are looking for a turnkey solution to better enable your customers, Cellocator can provide the right telematics and IoT solution. We can help you optimize fleet performance, enhance driver safety, allow efficient management of your assets, and make wireless vehicle security possible.

Cellocator Connect

Three Ways to Deploy Innovative IoT Solutions

TURNKEY SOLUTION

Enable real-time monitoring of vehicles, drivers, and cargo with the most innovative hardware suite combined with a powerful white labeled software interface that is custom branded to your business. You know your market and customers, let us handle the technology for you.

HARDWARE AND API

Leverage our cutting-edge hardware suite and combine it with a rich set of Application Program Interfaces (API) allowing your developers to quickly and seamlessly integrate mobile data into your existing or new application.

HARDWARE ONLY

Have your own application and just need the best devices to track, manage, and locate your customers assets and cargo? Look no further. We can assist with our broad range of hardware solutions. From driver behavior to asset tracking or cargo monitoring, we have you covered.

DRIVER BEHAVIOR
SAFETY SCORE: 97%

ODOMETER
128,389 MILES

SPEED
47 MPH

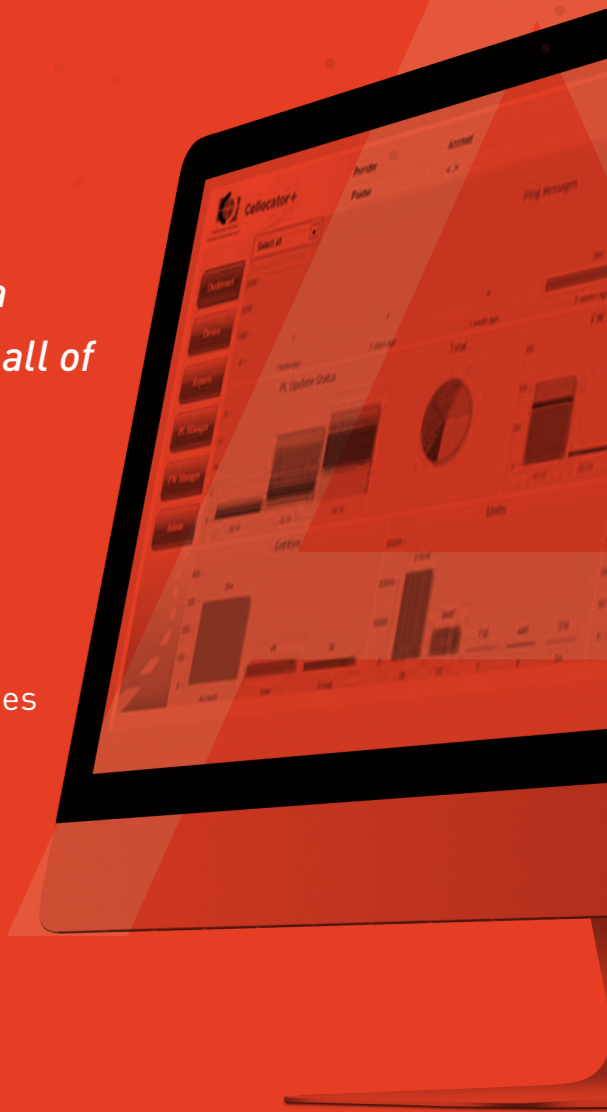
FUEL REMAINING
18.7 GALLONS

CARGO STATUS
TEMPERATURE: 46°F

Cellocator Control Tower

The Control Tower is an essential underlying administration tool for devices and mobile data access. Activate, manage, update, and control all of your Cellocator devices from our centralized web portal.

- Powerful, web-based maintenance platform
- Over-the-air configuration, maintenance and upgrades
- Update thousands of units in one click
- Full visibility of devices' status
- API for direct access to web services



Fleet Solutions *for Optimized Driver and Vehicle Performance*

01 Feature-Rich Fleet Management

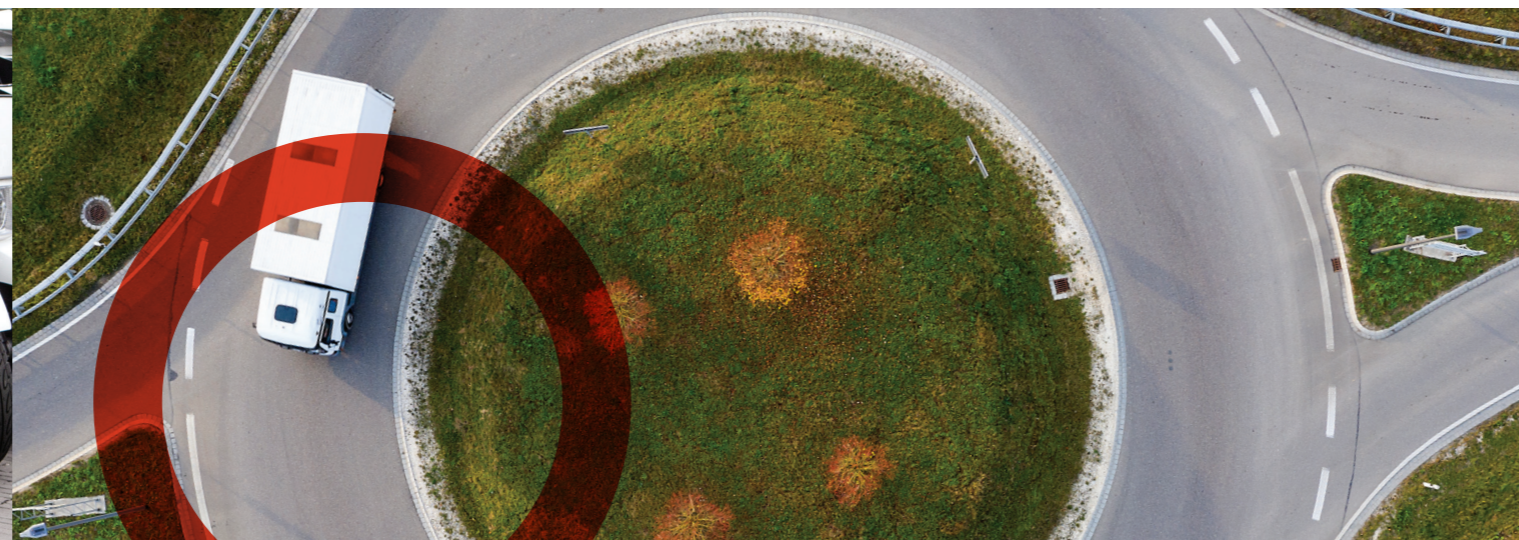
Cellocator offers fit-for-purpose hardware & software solutions for Fleet management—in addition to car and driver safety—to meet the unique business and operational requirements of a wide range of customers. Solutions designed to improve fleet safety and reduce fleet operating costs.

02 All Your Business Needs

Our fleet-focused product portfolio addresses all your fleet-related operational or business needs: From basic track & trace, through improved driver behavior, to remote vehicle diagnostics, we've got you covered. Our solutions ensure you can accurately track the heartbeat of all fleet operations, and react in real-time to any changes or exceptions.

03 Drive Performance Forward

You can manage and boost the performance of your fleet by educating drivers to improve their driving and by using remote vehicle diagnostics to upgrade vehicle performance. As a result, you can dramatically improve your control of the fleet drivers and conditions, reduce costs, and increase safety by realizing continuous enhancements to your fleet.



CR-300

Cost-Effective Fleet and Security Management Solution

The Cellocator CR-300B is Cellocator's entry-level unit for fleet management and vehicle security applications, available in 2G / 3G (EU, NA) variants.

The CR-300B is equipped with a rechargeable backup battery (1000mAh) and GSM jamming detection algorithms for improved compliance with vehicle security applications.

In addition, it is compatible with a variety of accessories which enable a wide range of applications such as fuel monitoring, temperature monitoring, identification & more.

01 Use Cases

Fuel Consumption & Security

Online monitoring of fuel consumption – using the CR-300B device and fuel solution accessories (fuel probe sensor, fuel level sensor and fuel cap protector) – including the level, the volume, time and location of refueling and draining, helps reduce fuel usage and prevent fuel theft.

Cold Chain

Assures the required temperature is maintained during shipments of perishable goods or pharmaceuticals, using the 1-wire temperature sensor which connects to the CR-300B device. Fleet owners/managers can receive real-time updates of any breaches of predefined thresholds and take action to guarantee compliance with cold chain shipment requirements.

Driver Identification

The driver ID of CR-300B in conjunction with the driver ID accessories (Dallas Keys, Keypad and Proximity Reader among others) can be used for vehicle immobilizations and driver-recognition in

security and fleet services applications.

Stolen Vehicle Recovery (SVR)

Provides advanced security with jamming detection and reaction to ensure stolen vehicle recovery (SVR). The CR-300B unit recognizes jamming attempts and reacts according to the selected method of reaction, for example disabling the engine or activating an output e.g. tuning lights on/off with horn.

Motorcycles & Scooters Protection

The CR-300 device is an ideal solution to protect motorcycles or scooters, thanks to its movement detection capabilities, compact size and easy installation. The device provides security and location alerts and can be configured to full hibernation mode to enable low battery consumption to prevent battery drainage. In this mode the device will start operating according to a predefined time or event (for example if its internal accelerometer is activated). The device IP rating can be upgraded from IP40 to IP65 using the CR protector.

02 Specifications

| | |
|------------------------|--|
| Cellular Communication | 2G/3G (NA, EU) |
| Dimensions | 91x69x23mm 3.58"x2.71"x0.90" |
| Weight | ~100gr ~3.5oz |
| Inputs/Outputs | 3 Inputs (Input type: Analog, Digital), 2 outputs, 1wire input, TTL serial |
| Input Voltage | 9-32VDC |
| Power | Li-Ion Polymer, 3.7V, 1000mAh, rechargeable |

| | |
|------------------------------|---|
| Accelerometer | 3D, 16g range, 12 bit representation, 1mg resolution |
| Vehicle Environment Immunity | Compliant with ISO 7637 test level #4 (in accordance with e-mark directive) |
| Operating Temperature | -30°C/-22°F to +70°C/158°F full performance |
| Protection | IP40 (IP 66 with protector) |
| Vibration, Impact | ISO 16750 |
| Certifications | FCC / CE / IC / EN12830 (1-wire temperature sensor rating) |

FOR MORE DETAILS:



CR-400

Next Generation, LTE-based Fleet Management Device

The Cellocator CR-400 is Cellocator's next generation fleet and security management device, and is based on the LTE Cat M1 network.

The CR-400 is a high quality, yet cost-effective and easy to install device, with built-in BLE connectivity and LED indicators. It is equipped with a rechargeable backup battery (1000mAh) and includes basic driver behavior capabilities and built-in motion sensors that enable movement and towing detection to ensure improved compliance with vehicle security requirements.



01 Use Cases

Fleet Operators

The CR-400 can monitor driver behavior (including harsh acceleration, harsh braking, harsh turning, over speeding and accident detection), enabling fleet operators to increase driver safety and operational efficiency, in turn helping to significantly reduce costs.

Driver Identification

The driver ID functionality of the CR-400, in conjunction with the related accessories (Dallas Keys, Keypad and Proximity Reader among others), can be used for vehicle immobilizations and driver-recognition in security and fleet services applications.

Stolen Vehicle Recovery (SVR)

The CR-400 includes a built-in motion sensor

which recognizes movement and towing attempts, providing alerts if the vehicle is detected to be moving at unauthorized times. In addition, different types of alerts can be generated if a vehicle leaves a certain geo-fence without authorization. These alerts enable the relevant security teams to react to ensure stolen vehicle recovery (SVR).

Fuel Management

Online monitoring of fuel consumption using the CR-400 device and fuel solution accessories (fuel probe sensor, fuel level sensor and fuel cap protector) – including the level, the volume, time and location of refueling and draining – can help to greatly reduce fuel usage and prevent fuel theft.



FOR MORE DETAILS:



02 Specifications

| | | | |
|----------------|---|------------------------------|---|
| Communication | LTE Dual mode CAT M1 | Power | Li-Ion Polymer, 3.7V, 1000mAh, rechargeable |
| Bluetooth LE | Secure BLE4, wireless connectivity with PC and smartphones; BLE5 ready (future firmware update) | Accelerometer | 3D, 16g range, 12 bit representation, 1mg resolution |
| Dimensions | 90.8x70.5x22.9mm 3.57"x2.78"x0.90" | Vehicle Environment Immunity | Compliant with ISO 7637 test level #4 (in accordance with e-mark directive) |
| Weight | 130gr 4.6oz (unpacked, without harness, battery included) | Operating Temperature | -30°C/-22°F to +70°C/158°F full performance |
| Inputs/Outputs | 3 Inputs (Input type: Analog, Digital), 2 outputs, 1wire input, RS232 serial | Protection | IP40 (IP 66 with protector) |
| Input Voltage | 9-32VDC | Vibration, Impact | ISO 16750 |
| | | Certifications | FCC / PTCRB / CE / IC / EN12830 (1-wire temperature sensor rating) |

MiniTrack

Compact, Waterproof, Cost-Effective Fleet Management Device with BLE Connectivity

The MiniTrack is Cellocator's cost-effective entry-level track & trace fleet management unit. It's a compact device, equipped with a rechargeable backup battery and rugged IP67 enclosure for outdoor durability and long operating life.

The MiniTrack features 2 multi-color LEDs for GSM/GPS signal indication, a molded 10 wire harness to ensure a quick and easy installation in addition to five digital IOs and a mobile app for driver identification. iDrive, Cellocator's driver identification app, enables communication with the MiniTrack device, and allows control of the vehicle immobilizer using a smartphone BLE interface.

01 Use Cases

Vehicle Fleets consisting of 2 or 3-Wheeled Vehicles (motorcycles/bikes/scooters)

The MiniTrack is a compact solution, ideal for companies operating fleets of 2 or 3-wheeled vehicles thanks to its movement detection capabilities, small size, easy installation and IP67 compliance. The MiniTrack provides quality, low-cost monitoring for virtually any type of smaller vehicle fleet, including security and location alerts.

Insurance Companies Specializing in Private Vehicles

Insurance companies can offer the MiniTrack as an add-on for their customers - primarily for usage-based insurance (UBI) and "pay as you drive (PAYD)" plans - by identifying the driver using the iDrive application. This can be especially relevant for customers with young drivers named in their policy.

Mass Market Track & Trace

The MiniTrack is a perfect fit for the mass market (fleet management companies, insurance companies, cellular carriers, etc.), where large numbers of telematics devices need to be integrated with a simple, cost effective and easy to install track and trace device with BLE connectivity.

Extra Security Device

The MiniTrack can also be used as a cost-effective secondary security device in the vehicle. For example, if the main fleet device has been harmed during a car theft attempt (and the SIM or main/backup battery are taken out), the MiniTrack device will start working instead of the main device.



02 Specifications

| | | | |
|------------------------|--|------------------------------|---|
| Cellular Communication | 2G: GPRS Class 10 | Accelerometer | 3D, 16g range, 12 Bit representation, 1mg resolution (2g range) |
| Dimensions | 90x34x13.8mm 3.54"x1.33"x0.54" | Vehicle Environment Immunity | Compliant with ISO 7637 Test level 4 |
| Weight | 46.5g 1.64oz | Operating Temperature | -30°C/-22°F to +70°C/158°F full performance |
| Inputs/Outputs* | 3 digital inputs, 2 outputs, 1 wire output, TTL serial | Protection | IP67 |
| Input Voltage | 9-32VDC | Vibration, Impact | ISO 16750 |
| Power | Li-Ion Polymer, 3.7V, 80mAh, rechargeable | Certifications | FCC / RED(CE) / E-mark / IC |

FOR MORE DETAILS:



Cello-CANiQ

Real-Time Monitoring of Vehicles, Drivers, and Cargo

With the advanced multi-source data analytics delivered by the Cello-CANiQ, your business intelligence is reinforced and operating costs are reduced, largely due to lower fuel consumption, reduced maintenance expenses, improved driving habits, and optimized maintenance processes.

The Cello-CANiQ is a fleet management solution, utilizing a smart algorithm to combine data from various vehicle environment interfaces. Extensive interfaces are all designed and configured for maximum flexibility with CAN data aggregation, filtering, processing and event triggering.



02 Product Variants

The Cello-CANiQ is available in two feature packages which both include the CAN interface:

Cello-CANiQ 30
Fleet management solution with various interfaces (I/Os), security capabilities and basic driver behavior (GPS-based).

Cello-CANiQ 50
All Cello-CANiQ 30 features in addition to advanced driver behavior capabilities, including accident event logging, recording and reconstruction.

01 Use Cases

Fuel Management

Easy, low-cost monitoring of the fuel tank includes fuel consumption rate, detection of fuel frauds (fuel siphoning), improved management of refueling time and place (gas station prices), accurate measurement of fuel efficiency, and improving driver efficiency with driving plans.

Fleet and Driver Safety with Driver Identification

The Cello-CANiQ enables flexible and configurable maneuver and trip scoring logic, including on-board trip ECO and safety scores calculations, and online, real-time driver feedback display leading to increased driver safety.

Proactive Vehicle Maintenance & Remote Diagnostics

Real-time vehicle performance profiling, including engine temperature, oil pressure, tire pressure, emission and fuel consumption are sent to the back-end with the DTC reporting in order to facilitate preventive maintenance. This enables an immediate reaction upon failure detection, and also sends

information to the repair shop, dramatically reduces repair costs and improving scheduled maintenance.

Car Rental / Car Sharing Companies

Effectively verify drivers by identifying and linking them to specific vehicles, allowing credential-based vehicle access. Real-time driver behavior feedback enables the rental company to take immediate preventive actions if required.

Cold Chain

Assists in maintaining the required environmental conditions (temperature, humidity, etc.) during shipments of perishable goods or pharmaceuticals, using the MultiSense device which communicates with the Cello-CANiQ device over BLE. Drivers can receive real-time updates of any breaches of predefined thresholds.

ELD/Hours of service

Assist in compliance with the Hour of Service/ELD mandate (USA & Canada) by providing ECU based data such as engine power status, vehicle motion status, miles driven, and engine hours to an ELD device using wired or BLE communication.

03 Specifications

| | | | |
|------------------------|--|------------------------------|---|
| Cellular Communication | Cellular Communication: 2G/3G (EU, NA) and 4G (LTE CAT M1 WW with 2G fallback) | Power | Li-Ion Polymer, 3.7V, 1Ah, rechargeable |
| Dimensions | 91x73x23mm 3.58"x 2.87"x0.91" | Accelerometer | 3D ±2g/8g range, 12 Bit representation, 1mg resolution, I2C interface |
| Weight | 110g 3.88oz | Vehicle Environment Immunity | Compliant with ISO 7637 Test level #4 (in accordance with e-mark directive) |
| Inputs/Outputs | 4 Inputs (Input type: Frequency; Analog, Digital), 4 or 5 outputs, 1wire input, RS232 serial, CANL, CANH (ODB, J1939), Kline | Operating Temperature | -30°C/-22°F to +70°C/158°F full performance |
| Input Voltage | 9-32VDC | Protection | IP40 |
| | | Vibration, Impact | ISO 16750 |
| | | Certifications | FCC |



FOR MORE DETAILS:



A version without the CAN is available, please contact us for more information

Asset Tracking

Solutions for Increasing Your Bottom Line

01 Improved Productivity

Cellocator's asset tracking product portfolio can greatly increase an enterprise's productivity and bottom-line. This increase is largely due to Cellocator's enhancements to the often-difficult task of successfully tracking and remotely managing the location, usage profile and security aspects of transportation equipment (such as trailers, containers, train wagons) or valuable mobile and fixed assets (such as electricity generators, heavy machinery, chemical toilets and waste containers).

02 Not Just Logistics Anymore

Asset Tracking is not just about objects in the supply chain moving from point A to B. While we do support cargo tracking, we can also see temperature excursions, security breaches, and trailer utilization.

Outside of logistics, rented and deployed assets, such as generators, heavy equipment (yellow iron), rental vehicles, and more can be tracked and cataloged with our platform.

03 Comfort and Security

Get the peace of mind from adequately instrumenting your assets from start to finish. Know for certain that things are where they are supposed to be, that their environmental exposure is within bounds, and that they are being handled appropriately by your providers.

From a box to a crane, Cellocator's asset solutions can help you take that next step.





CelloTrack Nano

Logistics Management IoT Smart Hub Solution and Network

The CelloTrack Nano device provides precisely the knowledge you need to manage your cargo and mobile assets effectively. It enables real-time as well as offline monitoring of the location and condition of cargo, assets and goods, including specific alerts related to issues and delays, using its internal sensors and the capability to track a wide area of remote wireless sensors (MultiSenses) around it.

Ensures continuous recording, event-triggered logic and 'management by exceptions' through flexible programming of business rules to eliminate supply chain mistakes, avoid delays or damages, and reduce insurance expenses.

In addition, it prevents theft, losses or misplacements by using proximity, tampering and location monitoring throughout the entire supply chain.

The CelloTrack Nano device offers flexibility and scalability as it can operate independently, using its internal sensors or as part of a wireless sensor network using a varied number of MultiSense, depending on the specific requirements.

Knowledge is Power.

CelloTrack Nano gives you that Power in Real-Time!

FOR MORE DETAILS:



01 Specifications

| | | | |
|-------------------------|--|-----------------------|---|
| Cellular Communication | 2G/3G/4G (LTE-Cat1-NA) | Input Voltage | 5VDC ±5% |
| Dimensions | 86.2x59.1x22.7mm 3.39"x2.33"x0.89" | Power | Li-Ion Polymer, 3.7V, rechargeable, for 2G/3G: 1300mAh, for LTE: 1000mAh |
| Weight | 96 gr 3.39oz | Accelerometer | 3D, ±8g range, 4mg resolution, I2C interface |
| Inputs/Outputs | Distress button, Tamper, Digital input, USB | Operating Temperature | -20°C/-4°F to +60°C/140°F full performance |
| GPS Technology | CSR SiRFstarV™ engine supporting Hybrid GNSS | Protection | IP66 |
| Wireless Sensor Network | Short range RF 2.4GHz wireless communication | Vibration/Impact | According to standard EN 12830 |
| Sensors | Temperature, Accelerometer, Light, Impact/Free Fall, Movement, Tampering, Barometric Pressure, Listen in | Certifications | FCC / CE / IC / PTCRB / UL / IEC 60529 – IP66 / AT&T / EN12830:1999 / GDP / SAR / FAA |

MultiSense

One Tool for Many Different Environment Sensing Capabilities

With the ever increasing growth and challenges in global supply chains, maintaining an accurate picture of what is happening across your business at any given time is practically impossible. An individual MultiSense or group of MultiSenses forming a sensor network can greatly enhance your supply chain management and cost reduction.

The MultiSense is an innovative, smart and compact monitoring device, which includes a range of internal embedded sensors that can sense temperature, relative humidity, light, impact, movement, orientation change, magnetic (door/window open/close status), and more.

These sensors play a big role in reducing risk and exposure to losses, in turn bringing peace of mind to customers.

The MultiSense communicates via 2.4GHz short range frequency communication protocol to all Cellocator compatible devices or any other hub that supports the same RF communication protocol.

The solution offers real-time visibility, security and awareness of cargo and asset location, in addition to the cargo condition, potential problems and delays throughout the supply chain.

FOR MORE DETAILS:



01 Specifications

| | | | |
|-----------------------------|---|-----------------------|--|
| Communication | Short range RF 2.4GHz wireless | Operating Temperature | Regular Coin Battery -10°C/14°F to +60°C/140°F XT Coin Battery -30°C/-22°F to +85°C/185°F |
| Dimensions | 58.5x46x15mm 2.30"x1.81"x0.59" | Protection | IP67 |
| Weight | ~19 gr (without battery) ~0.67oz | Certifications | FCC / CE / UL / IEC 60529 – IP67 / EN12830:1999 / EN 13485:2002 / Environmental regulation tests |
| Average Current Consumption | Transmission pulse: 23mA | | |
| Power | 3V Lithium coin battery CR2450 Protections: over current | | |
| Logger | Internal storage Up to 3,000 samples | | |
| Sensors | Temperature, Accelerometer, Humidity (MultiSense-TH), Light, Magnetic | | |



CelloTrack 10Y

Non-Rechargeable Wireless Asset Management Device

The CelloTrack 10Y is an asset tracking device with up to 10 years of operational lifetime, using a non-rechargeable battery, including wireless sensor connectivity (with the MultiSenses). The CelloTrack 10Y is ideal for long term remote applications, requiring minimum or no maintenance at all. Suitable for application with extreme operating temperatures in which charging and performance are challenging.

The capabilities provided by the CelloTrack 10Y greatly increase the productivity and bottom-line of enterprises. This is largely due to the improvement in the often difficult task of successfully tracking and remotely managing the location, usage profile and security aspects of transportation equipment such as trailers, containers, train wagons or any kind of valuable mobile and fixed assets, such as electricity generators, heavy machinery, chemical toilets and waste containers.

FOR MORE DETAILS:



01 Specifications

| | | | |
|------------------------|--|---------------------------------------|--|
| Cellular Communication | LTE Cat 1 NA with 3G Fallback | Accelerometer | 3D, ±8g range, 12 Bit representation, 4mg resolution Movement detection |
| Wireless | 2.4 GHz proprietary wireless interface for MultiSense integration | Wireless Interface | 2.4 GHz proprietary wireless interface for MultiSense Integration |
| Dimensions | ~ 203x81x50mm 8"x3.19"x1.97" | Operating Temperature | -30°C/-22°F to +75°C/167°F |
| Weight | ~ 510 gr ~1lb 2oz | Protection | IP67 |
| Inputs/Outputs | 2GPIO (Input type: Frequency; Analog, Digital), Tamper, Distress button. USB | Vibration, Impact, Humidity, Chemical | ISO 16750 parts 3 & 4 |
| Power | Lithium-thionyl chloride (SOCl ₂), 3.6V, 42.5 Ah, primary (non-rechargeable) | Certifications | CE / FCC / IC / PTCRB / AT&T / ISO 16750 part 3 & 4 / UL / HALT / RoHS and Conflict Minerals |
| GNSS Technology | Internal module, CSR SiRFstarV™ based, GPS and GLONSS supported. | | |

Advanced Asset Tracking and Remote Monitoring Solution

The CelloTrack product line is designed for advanced asset tracking with remote monitoring, that features enhanced functionality, robustness and ease of installation. The CelloTrack is suitable for a wide variety of asset management applications that require a long operational life with or without a power source.

The CelloTrack product line is available in two variants – a standalone version and a power version, which includes extended battery life and the ability to connect external sensors via two configurable GPIOs.

The CelloTrack models are suitable for 2G (NA), 3G (NA/EU), LTE Cat 1 NA with 3G Fallback and LTE

Cat 1 EU with 3G and 2G Fallback. The LTE version also includes wireless sensor connectivity (using the MultiSense), while the 2G/3G version has battery solutions for 3Y and 8M in addition to the XT battery.

The capabilities provided by the CelloTrack product line can greatly increase the productivity and bottom-line of enterprises. This is largely due to the improvement in the often difficult task of successfully tracking and remotely managing the location, usage profile and security aspects of transportation equipment such as trailers, containers, train wagons or any kind of valuable mobile and fixed assets, such as electricity generators, heavy machinery, chemical toilets and waste containers.

FOR MORE DETAILS:



01 Specifications

| | | | |
|------------------------|--|---------------------------------------|--|
| Cellular Communication | LTE Cat 1 NA with 3G Fallback LTE Cat 1 EU with 3G and 2G Fallback 3G (NA/EU), 2G (NA) | Input Voltage | CelloTrack 4.2V 1A CCCV Charger CelloTrack Power 9-32V DC |
| Wireless | 2.4 GHz proprietary wireless interface for MultiSense integration | Power | Li-Polymer, 3.7V, rechargeable 13Ah (3Y), 2Ah (8m), 5.3Ah (XT) |
| Dimensions | ~155mm x 81mm x 45mm 6.10" x 3.18" x 1.77" | Accelerometer | 3D, ±8g range, 12 Bit representation, 4mg resolution movement detection |
| Weight | 320gr (11.29oz) to 530gr (18.7oz) depending on selected options | Operating Temperature | Discharging: -30°C/-22°F to +70°C/158°F Charging: -20°C/-4°F to +60°C/140°F |
| Inputs/Outputs | 2GPIO (Input type: Frequency; Analog, Digital), Tamper, Distress button. TTL serial. | Protection | IP67 |
| | | Vibration, Impact, Humidity, Chemical | ISO 16750 parts 3 & 4 |
| | | Certifications | CE / FCC / IC / PTCRB / AT&T / UL / Cell Reliability Assessment: Annual Failed Ratio <0.5% [self-declaration] HALT / RoHS and Conflict Minerals (CelloTrack LTE) |

CelloTrack Solar

Robust Solar-Powered Asset Management Device

The CelloTrack Solar is the industry's first dual-powered asset tracking solution. Its wireless sensor connectivity provides measurements of the various environmental conditions of the cargo. Solar-powered supercapacitors (supercaps) and long-lasting primary batteries ensure unmatched service life and critical event visibility. The CelloTrack Solar, with its highly rugged durable enclosure is an ideal solution for containers, trailers or assets in remote locations and harsh conditions where no other recharging facilities exist.



02 Product Variants

There is a North American and an EU version of this device based on cellular network availability.

01 Use Cases

Containers

Large industrial companies that deliver valuable containers of cargo often experience theft and tampering attempts, resulting in often significant financial damages. In addition, to ensure a valuable cargo reaches its destination intact, monitoring of the cargo's journey is required, from the point of origin to the point of delivery. The Cellocator Solar allows the continuous tracking of the container and its cargo, as well as providing logistic and inventory information. This information includes measurements of the environmental conditions (temperature, humidity, etc.), and alerts when there is a deviation from the route or predefined conditions.

Dry Vans & Trailers

The CelloTrack Solar enables you to track the location of dry vans and trailers. When used with MultiSense devices, you can also monitor cargo conditions in real-time, while receiving alarms when deviations from the planned route or required conditions (temperature/humidity) occur,

or when doors are opened unexpectedly. Maximize trailer utilization while reducing operational costs and improving delivery predictability.

Rental Assets

Stakeholders can remotely and efficiently monitor the status of their rented assets' usage, including storage containers, construction machines, electricity generators, caravans, chemical toilets, and more. During the rental period, the location, displacement, operation hours (by movement), door status and other inventory management aspects for adherence of contractual obligations can all be monitored.

Heavy Equipment

Trucks, earthmovers, paving equipment, dumpsters, generators and machinery—often left for long periods on construction sites—are expensive to replace and, if stolen, can significantly interrupt work progress. The robust, water, dust and extreme temperature resistant device can easily be deployed on all types of heavy equipment. The device immediately generates alerts when the equipment is moved and also provides its precise location to the stakeholder.

03 Specifications

| | | | |
|------------------------|---|-----------------------|--|
| Cellular Communication | LTE Cat 1 NA with 3G Fallback LTE Cat 1 EU with 3G and 2G Fallback | Solar Panel | Monocrystalline, two panel of 110x80 mm max 2.4 W @STC |
| Wireless | 2.4 GHz proprietary wireless interface for MultiSense integration | GNSS Technology | Internal module, SiRFstarV™ based GPS and GLONSS supported |
| Dimensions | ~43mmx110mmx490mm 1.7"x4.33"x19.3" | Accelerometer | 3D, ±8g range, 12 Bit representation, 4mg resolution, Movement detection |
| Weight | ~1150gr ~2lb 8.5oz | Operating Temperature | -30°C/-22°F to +75°C/167°F |
| Inputs/Outputs | Magnet based activation Magnet based tamper detection | Protection | IP69k, IP67 |
| Power | lithium-thionyl chloride [SOCl ₂], 3.6V, 34 Ah, primary (non-rechargeable) | Certifications | CE / FCC / IC / PTCRB / AT&T / UL / RoHS / conflict minerals; Environment: Based on AAR S5703 Railroad Electronics Environmental Requirements; MIL-STD-810E |

FOR MORE DETAILS:





Currently only available in North America

FreightCam

Literal Visibility into Remote Assets

The FreightCam® combines a high-definition camera, image recognition processor, door sensor and 'cargo-area' environmental sensors for true freight visibility and condition. The camera allows your operations to obtain root cause analysis for claims, including location and visual proof. The FreightCam addresses a critical gap in the supply chain for freight transportation providers, shippers and supply chain stakeholders to gain greater visibility and insight to their freight through imagery, environmental sensors, and real-time updates.

The camera is easy to install (under 15 minutes) as a completely wireless, battery powered unit.

The FreightCam can also detect and report if pallets are loaded if the cargo has been tagged with our MultiSense devices. When paired with an Cellotrack or Cellotrack Solar real-time event reporting can occur. Also, pair with our mobile app and you can retrieve on-demand photos and cargo status.

The FreightCam delivers complete cargo visibility including loaded status, loaded percent, and cargo condition via temperature, humidity, pressure, and light level sensors. Use machine learning to categorize photos and identify trends. The FreightCam can be triggered by door open/close, BOD/EOD, on-demand, or at a time interval.

FOR MORE DETAILS:



01 Specifications

| | | | |
|------------------------|--|----------------|---|
| Cellular Communication | X | Humidity | Accuracy ±2% rH [typ]; ±3% [max], Resolution to 0.1% RH |
| Wireless | 2.4 GHz proprietary wireless interface for integration | Environmental | Thermal cycle/shock, humidity, mechanical vibration/shock, chemical exposure per SAE J 1455; salt spray per ASTM B117-16 Operating Temperature -30°C/-22°F to +75°C/167°F |
| Dimensions | ~ 203x81x50mm 8"x3.19"x1.97" | Protection | IP69K per IEC 60529 |
| Weight | ~ 500 gr ~1lb | Certifications | FCC / CE / UL / RoHS / Conflict Minerals |
| Inputs/Outputs | 2GPIO (Input type: Frequency; Analog, Digital), Tamper, Distress button. USB | | |
| Power | 19Ah / 3.6V Primary Battery | | |
| Sensing Temperature | Accuracy ±0.2C [typ]; ±0.4C [max], Resolution to 0.1°C | | |

CelloSense

Smart, Low Maintenance & Rugged Multi-Sensor

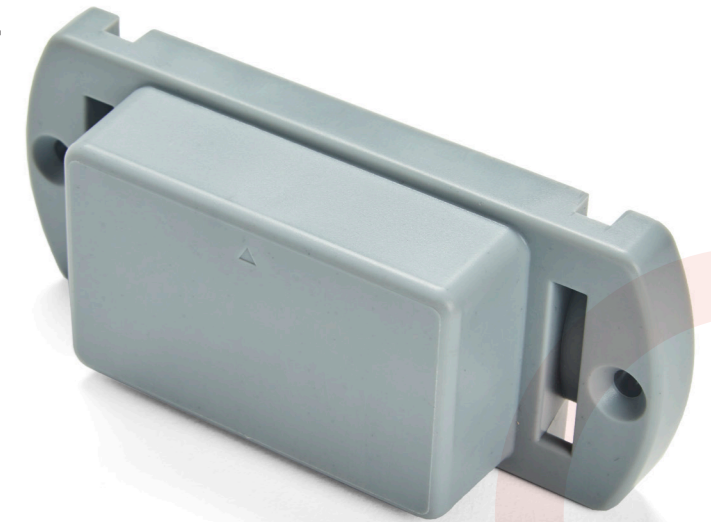
Having complete visibility of what is happening across your business at any given moment, while also effectively monitoring and efficiently managing it, can be super challenging. The CelloSense, as part of a smart sensor network, enables you to greatly enhance your supply chain management and reduce costs, especially within high impact environments.

The CelloSense is a smart, low maintenance monitoring device featuring extended range, and a rugged IP69K enclosure for outdoor durability and long operating life in harsh conditions. It utilizes BLE technology to communicate with Cellocator's line of asset products, or any other hub that

supports BLE communication (smartphones, tablets, and OEM hubs). The CelloSense not only tracks assets, but also monitors the environment and conditions in which the asset is currently located or handled via temperature, accelerometer, and magnetic (doors closing/opening) internal sensors.

The CelloSense brings the logistics management of heavy-duty assets into the IoT age by enabling real-time awareness of a variety of objects and on-the-fly alert notifications, which in turn ensures global visibility.

FOR MORE DETAILS:



01 Specifications

| | | | |
|-----------------------------|--|-----------------------|---|
| Communication | Short range RF BLE 4.1 ~2.4GHz wireless communication | Logger | Internal storage around 3,000 logged data samples and events |
| Dimensions | 111x46.3x28.6mm | Sensors | Temperature, Accelerometer, Magnetic |
| Weight | 90gr | Operating Temperature | -30°C to +85°C |
| Average Current Consumption | Transmission pulse: 23mA | Protection | IP69K |
| Power | ER14505 primary battery, 3.6V Lithium-Thionyl Chloride, AA size, 2500mAh | Certifications | CE / FCC / IEC 60529 - IP69K / Environmental Regulation Tests |

Accessories

One Stop for Your Telematics Solutions



01 BT Extender

Short Range, 2.4 GHz RF Communication Adapter

A Bluetooth dual mode converter to RS232, supporting the wireless communication channels between the Cello Family devices and other devices with BT/BLE capabilities.



02 DFD

A Real-Time Driver Feedback Display

Real-time driver feedback display providing continuous real-time coaching via visual and/or audible feedback to the drivers, indicating the risk level of their driving to increase safety and ensure ECO driving.



03 CAN Contact-less Adapter

Low-Cost, Non-Intrusive, Non-Galvanic Interface with the Vehicle CANBUS

The CAN Contact-less Adapter provides a non-intrusive, non-galvanic interface with the vehicle CAN Bus. It complies with the Cello-CANiQ interface and with Cellocator harnesses.



04 Cellocator Hands Free

Voice Capabilities & Features for the Cello Family Units

The Cellocator Hands-free Kit provides the hardware components that enable the voice capabilities and features of the Cello family units.

When IoT Solutions Meet Unique Challenges

01 Putting It All Together

Ever wonder how those giant cranes come to life so they can build your cities next tall building? There are many large and unique pieces that must come together perfectly.

Crane operators use our unique asset tracking solutions to track the various components to ensure the puzzle works. And, while on the job, you can see each crane across the city or state. And when the job is done, it gets disassembled and shipped with tracking.

02 Rented Assets Management

The logistics and maintenance of rented equipment is often challenging, primarily because rental companies have no information about how their rented equipment or assets are treated once they leave their premises and are handed over to the customer.

The remote monitoring of rented assets, such as storage containers, construction machines, generators, and even toilets, ensures you have real-time information on an asset's location, displacement, operation hours, and more.

SOLUTIONS TAILORED TO YOUR NEED

Customized Solutions

Cellocator prides itself on understanding our customer's needs and building a solution that is tailored to the problem or issue. If you have a unique situation that requires something a bit more customized, please reach out to our team for help. We have found that in most situations we can leverage one of our existing devices and often resemble one of the hundreds of use case scenarios we have already tackled.

Our mission is to provide comprehensive and innovative IoT and telematics solutions to sustain our partners' profitable growth, primarily through superior customer service, and commitment to quality.

We have created solutions that address a broad array of features, functions, and benefits, such as:

- Asset and driver security
- Temperature monitoring
- Usage based insurance
- Fuel efficiency
- Car sharing management
- Regulatory compliance issues
- Engine diagnostics
- Pharmaceutical tracking
- And much more



A Worldwide Presence

Support where you need it, when you need it.

CELLOCATOR HEADQUARTERS

14 Hamelacha Street,
Rosh Ha'ayin, 48091
Israel
Tel.: +972-3-5723111
sales@cellocator.com

CELLOCATOR INDIA

Office 204, Pentagon P3,
Magarpattacity, Pune 411028
Maharashtra, India
+919975801632
sales-india@cellocator.com

CELLOCATOR USA

6204 Benjamin Rd
Suite 211
Tampa, Florida 33634 USA
+1 813.877.4500
ussales@cellocator.com

CELLOCATOR MEXICO

Tecoyotitla no. 412
Edificio arenal, local 102
Col. Ex-Haciendo de Guadalupe
Chimalistac,
Del. Alvaro Obregón,
CDMX, CP 01050
Tel. +52 551 520 1270
ventas@cellocator.com

CELLOCATOR COLUMBIA

Transv. 60 #115-58
Torre C – Oficina 207
Centro Ilarco
Bogotá, Colombia
Tel: +57 1 5330745
+57 3138534895
ventas@cellocator.com



At Cellocator, we work seamlessly together as one firm to serve our clients wherever they need us. We make our collective knowledge, experience and global network available to our clients.

Looking to work with a Cellocator representative in your part of the world? Check out our worldwide office listing to find a direct Cellocator contact.



Cellolocator
by **PowerFleet®**

CELLOCATOR WORLDWIDE HQ

14 Hamelacha Street,
Rosh Ha'ayin, 48091
Israel

Tel.: +972-3-5723111
www.cellolocator.com